
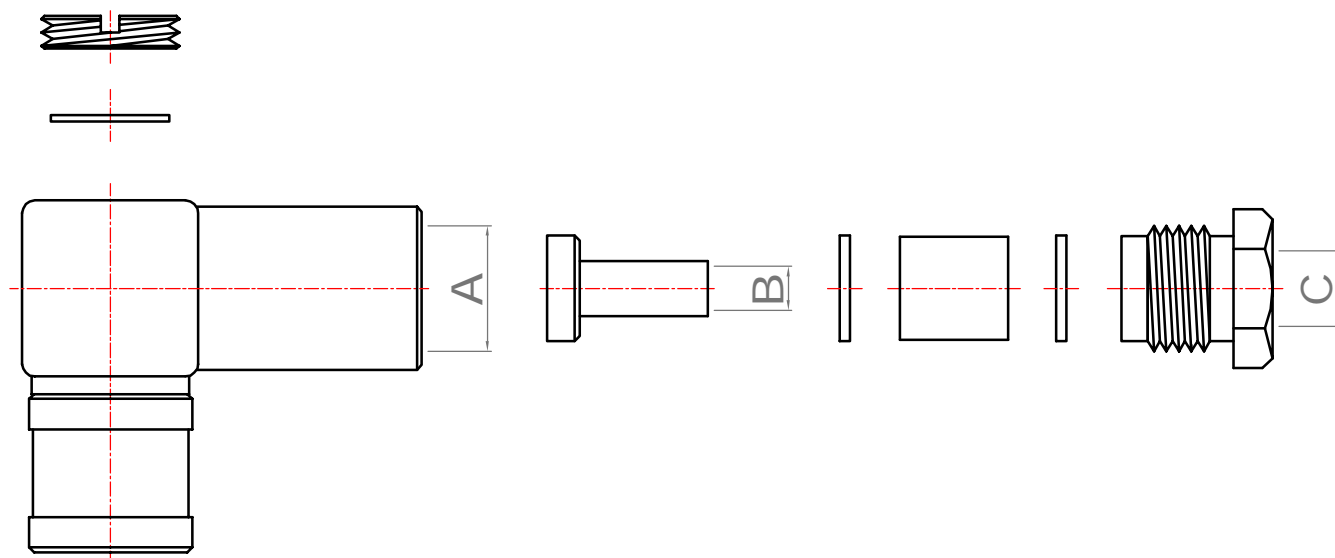


Revisions

Outline Drawing

| ISS | Symbol | Description | Date |
|-----|---|---|------------|
| B |  | CHE for New Drawing Frame & New PN System | 2006/07/10 |



Electrical :

Impedance : 50 ohm

Frequency Range : 0~4 GHz .

Voltage Rating : 250 V rms MIN. (depending on cable)

Insulator Resistance : $\geq 1 \text{ G}\Omega$

Dielectric Withstanding Voltage : 750 V rms .

Contact Resistance : Center Contact $\leq 5 \text{ m}\Omega$.

Outer Contact $\leq 2.5 \text{ m}\Omega$

| Cable Type | Dimensions | | |
|------------|------------|------|-----|
| | A | B | C |
| RG174,316 | M5 | 1.75 | 3.0 |

Mechanical :

Mating : Snap-on Coupling.

Engagement Force : $\leq 14.2 \text{ lbs}$

Disengagement Force : 1.8~14.2 lbs

Environmental :

Temperature Range : -65°C to 165°C

Corrosion (Salt Spray) : MIL-STD-202, Method 101,

Cond. B

Thermal Shock : MIL-STD-202, Method 107, Cond. B

Mechanical : MIL-STD-202, Method 213, Cond. B

Vibration : MIL-STD-202, Method 204, Cond. D

Notes :

1. The overall contour may be slightly changed per terminating with different cable and we reserve right to change it without notice.
2. Any changes for interface dimensions are strictly prohibited.
3. The Material and plating are in various options per customer's request.
4. A complete information for connectors is available upon request.

| Scale | Abbr. | Date | Rev. |
|-------|-------|------------|------|
| NTS | ST | 2017/03/17 | B |

| | | |
|-----------------|---|---|
| Tolerances : |  |  |
| .X ± 0.2 | All Dimensions in mm (Unless Otherwise Specified) | |
| .XX ± 0.1 | | |
| .XXX ± 0.05 | | |

| Drawn | Checked | Approved |
|------------|------------|------------|
| Mark | Ryan | G. Sun |
| 2015/01/27 | 2015/01/27 | 2015/01/27 |

Proprietary Note
This document contains information proprietary to S-Conn, which is either copyrighted, or patent applied for, and / or protected by trade secret laws.
This document or parts thereof, may not be used, disclosed or reproduced in any form by any method, or for any purpose, without the written permission of S-Conn, Taiwan.

Customer P/N: Nil

DWG.NO.

SB123



TITLE

SMB R/A Plug, Clamp Type

S-Conn Enterprise Co., Ltd.

